

**Exceptional Value.**

**Perfect Fit.**



**RIT**

**An Outstanding Investment**  
For Deaf and Hard-of-Hearing Students





RIT is a vibrant learning environment with outstanding academic, social, and personal development opportunities for deaf and hard-of-hearing students that are unmatched by any other university in the world.

**Why students  
choose RIT**





# A unique college. A superior education.

## 1st

RIT is home to the National Technical Institute for the Deaf, the first and largest technical college in the world for deaf and hard-of-hearing students.

## 1.1k

RIT serves more than 1,100 deaf and hard-of-hearing students from around the world who live, study, and work alongside hearing peers on the RIT campus.

## 3,000

Hours of employment advising annually by the NTID Co-op and Career Center.

## 96%

Placement rate within one year of graduation for deaf and hard-of-hearing students seeking employment.

## 75%

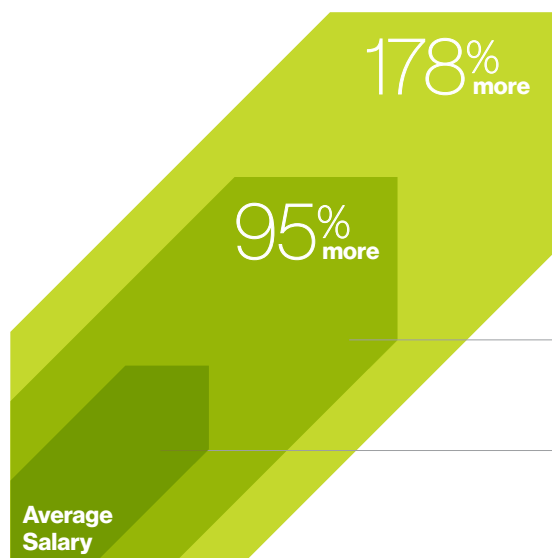
First year persistence, for deaf and hard-of-hearing students.

## 10,000+

RIT/NTID graduates working across the country and around the world.

## Higher Earnings

Median Salary at Age 50



### Deaf and hard-of-hearing RIT graduates are competitive in the marketplace

According to a study conducted with the Social Security Administration, deaf and hard-of-hearing RIT graduates had higher career earnings than their deaf and hard-of-hearing peers who attended other postsecondary institutions.

Deaf and Hard-of-Hearing RIT Graduates (Bachelor's)

Deaf and Hard-of-Hearing RIT Graduates (Associate)

Deaf and Hard-of-Hearing Graduates of Other Postsecondary Institutions

# First-Class Career Education

RIT offers more than 200 academic programs across a range of disciplines, so your student can select a course of study that matches their interests and career goals. We offer creative learning approaches and practical experience to prepare students for the future they envision for themselves.

## Bachelor's Degree Programs

Students can choose from more than 90 programs in art and design, business, computing and information sciences, engineering, health sciences and technology, liberal arts, and science.

## Pre-Baccalaureate Programs

If your student is interested in a bachelor's degree program, but does not fully meet the admission requirements, they may qualify for a pre-baccalaureate program. These individualized programs prepare your student to enter a bachelor's degree program as soon as academically ready.

## Associate+Bachelor's Degree Programs

Students can start on the road to academic success by completing an associate degree that provides a solid foundation and prepares them to continue and succeed in an RIT bachelor's degree program.

## Career-Focused Associate Degree Programs

Your student can choose a fast track to success by pursuing one of our exciting career-focused associate degree programs designed to prepare graduates for immediate employment in today's high-tech fields.

## Undecided

RIT is one of the few universities where students can immerse themselves in a major from day one. But, if your student needs more time to evaluate their interests and explore which major best suits their career aspirations, exploration options are available in each college. Exploration options enable students to use up to one year (two semesters) to take a variety of courses, explore majors and career paths, and make an informed decision about which major is best for them.

[rit.edu/ntid/exploremajors](https://rit.edu/ntid/exploremajors)

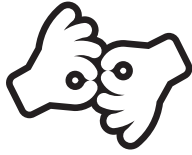


**Charles Obeng  
Asiamah and  
Jacqueline Duah**

Parents of RIT/NTID  
graduate Maameyaa  
Asiamah

Maameyaa has grown tremendously in her time at RIT. She has taken on leadership roles, been a mentor, and truly has grown in self-confidence. She learned a lot about herself and how to balance academics as well as social and extracurricular activities. Maameyaa benefited the most by having a community of deaf and hard-of-hearing students that she could immerse herself in, and she found a home away from home. The resources and opportunities that foster an atmosphere for growth and success made sending Maameyaa to RIT a smart choice.





**135**

**in-house interpreters**



**60**

**real-time captionists**



**400+**

**trained notetakers**

41,101  
hours  
outside  
classroom

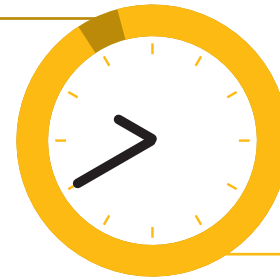


91,075  
hours in  
classroom

**132,000+**

**interpreting hours**

4,266  
hours  
outside  
classroom



28,051  
hours in  
classroom

**32,000+**

**captioning hours**

## Extraordinary Support and Access Services

If your student takes courses in RIT's College of Art and Design, Saunders College of Business, Golisano College of Computing and Information Sciences, Kate Gleason College of Engineering, College of Engineering Technology, College of Health Sciences and Technology, College of Liberal Arts, College of Science, School of Individualized Study, or Golisano Institute for Sustainability, your student can choose from among:

- > sign language interpreting services,
- > FM systems,
- > real-time captioning services, and
- > notetaking.

Alternative services also may be provided. In addition, your student will have access to educational support services, including experienced faculty tutors, personal and career counseling, and academic advising. These faculty tutors, counselors, and advisors are skilled at working with deaf and hard-of-hearing students of all communication modes.

If your student takes NTID courses, faculty members will communicate directly using a variety of strategies, such as:

- > sign language with voice,
- > sign language without voice,
- > spoken language (FM systems are available),
- > printed/visual aids,
- > web-based instructional material, or
- > individual tutoring.

In cases where a faculty member's communication strategies do not appropriately meet your student's needs, your student can request access services from the Department of Access Services.

An assigned counselor will work closely with your student to help plan their collegiate experience and provide personal, social, career and academic advising and counseling services.

[rit.edu/ntid/exploreaccess](http://rit.edu/ntid/exploreaccess)

### **RIT is designated as a Microsoft Accessible University**

RIT is one of only six universities in the nation that has been named a Microsoft Accessible University for its endeavor to improve upon and provide cutting-edge accessibility solutions.



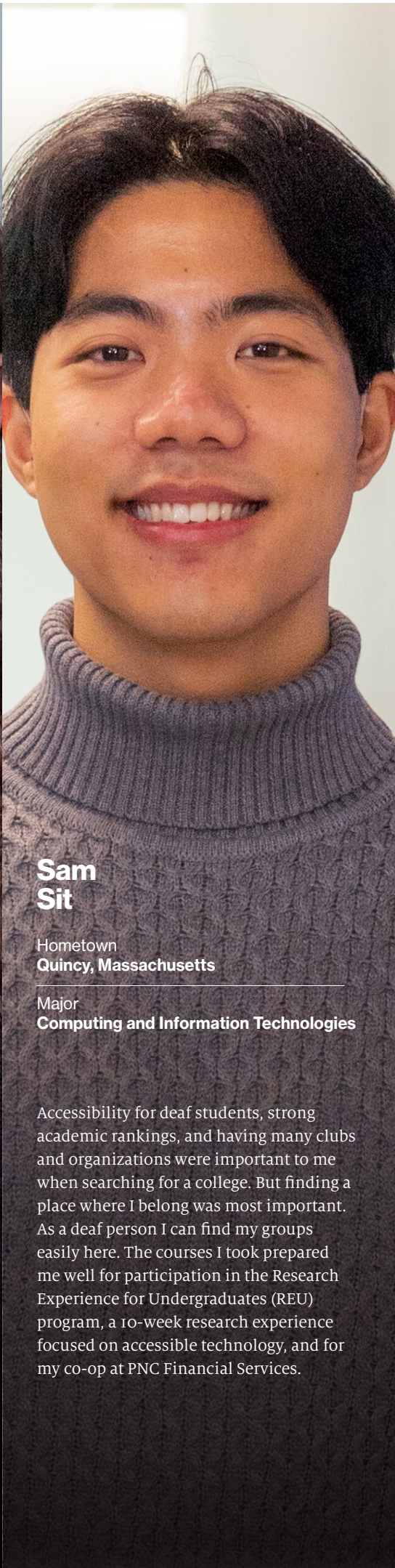


## Lily Mussallem

Hometown  
**Lemont, Illinois**

Major  
**Biomedical Engineering**

I had deaf friends and deaf peers at my high school, but they were few and far between. The idea of not feeling “alone” on campus and being able to get the best of both worlds—the Deaf community and being mostly mainstreamed in my course work at RIT—were huge factors in my decision to choose RIT. Everyone I have met here goes out of their way to make sure I feel welcomed and included, especially professors who give a lot of confidence to young deaf students finding their footing in this world. I would not be anywhere near as confident in myself without the love from the RIT community.



## Sam Sit

Hometown  
**Quincy, Massachusetts**

Major  
**Computing and Information Technologies**

Accessibility for deaf students, strong academic rankings, and having many clubs and organizations were important to me when searching for a college. But finding a place where I belong was most important. As a deaf person I can find my groups easily here. The courses I took prepared me well for participation in the Research Experience for Undergraduates (REU) program, a 10-week research experience focused on accessible technology, and for my co-op at PNC Financial Services.



## Maameyaa Asiamah

Hometown  
**Fairfax, Virginia**

Major  
**Laboratory Science Technology/  
Biochemistry**

I see myself as a strong, deaf Black woman who can make a difference in the world as a scientist. Because RIT is a college that caters to the needs of deaf and hard-of-hearing students, and has students enrolled from all over the world, I felt that I could fit in comfortably because of this diversity. My decision to enroll was based on my ability to learn, relate, and empathize with all different types of cultures that I would hopefully experience. At RIT, I excel in and out of the classroom. I am a student leader in several clubs, and I was named the 2022 NTID Undergraduate Delegate for my accomplishments. All of my experiences here are preparing me well for my future.





## **Flavio Medina, Jr.**

Hometown  
**Arlington, Virginia**

---

Major  
**Applied Computer Technology/  
Computing and Information Technologies**

When I was searching for a college I was looking for accessibility, community, and strong academics. I found these things at RIT. The accessibility for deaf and hard-of-hearing students is unmatched in quality, and is helping me be successful in my classes. The community at RIT has been incredible because I have had the chance to meet so many different types of people and create meaningful relationships and have fun experiences. I found a community and a culture where I am appreciated for what makes me unique. RIT's amazing reputation in technology majors provides me an incredible and challenging environment in which to pursue my degree.



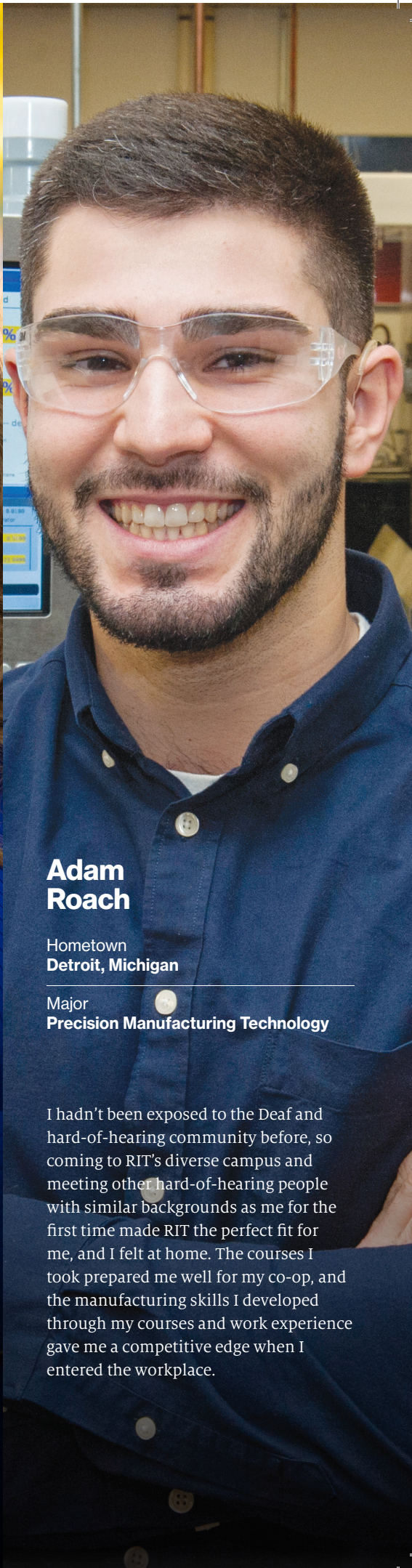
## **Serena Rush**

Hometown  
**Silver Spring, Maryland**

---

Major  
**Psychology**

I chose RIT because I wanted to be part of both the Deaf world and the hearing world, and also pursue my passion for theater. I wanted to have instruction in both ASL and spoken English, as I've been raised using both. I knew that if I had gone to another university, I would not have been able to fully dive into experiences as I have here. RIT fits my criteria of a top-choice school because it's a vibrant campus that embraces the Deaf community. The academics are top-notch and the unique performing arts program has allowed me to develop my acting skills and collaborate with hearing and deaf performers.



## **Adam Roach**

Hometown  
**Detroit, Michigan**

---

Major  
**Precision Manufacturing Technology**

I hadn't been exposed to the Deaf and hard-of-hearing community before, so coming to RIT's diverse campus and meeting other hard-of-hearing people with similar backgrounds as me for the first time made RIT the perfect fit for me, and I felt at home. The courses I took prepared me well for my co-op, and the manufacturing skills I developed through my courses and work experience gave me a competitive edge when I entered the workplace.



# A Worthwhile Investment

## 2023-2024 Tuition Comparison



RIT tuition

RIT tuition for deaf and hard-of-hearing students enrolled in any undergraduate program (domestic students only)



Average financial aid per domestic deaf and hard-of-hearing student

\$20,153

90%

of undergraduate deaf and hard-of-hearing students receive financial aid

## Exceptional Value and Affordability

RIT is committed to ensuring that a quality education remains within the financial reach of deaf and hard-of-hearing students. Because RIT receives federal support, **deaf and hard-of-hearing students pay less than one-half of RIT's regular tuition rate.** The reduced cost makes RIT a truly exceptional value.

In addition to the substantial tuition reduction, a variety of financial aid options are available, including scholarships, grants, loans, state Vocational Rehabilitation support, and Supplemental Security Income assistance.

[rit.edu/ntid/affordability](http://rit.edu/ntid/affordability)

## Real-World Work Experience Before Graduation

RIT's cooperative education program provides students tremendous opportunities to gain valuable experience in their field before graduation. A co-op offers students a taste of the world of work and practical experience to include on their resume when applying for employment after graduation. Co-ops also help students finance a portion of their education, give them opportunities to make professional contacts in their field, and foster personal growth and independence.

[rit.edu/ntid/explorecoop](http://rit.edu/ntid/explorecoop)

## Specialized Job Search Assistance

Your student's career success is supported by our employment specialists who travel coast to coast meeting with employers, building relationships, and educating the marketplace about the value of hiring deaf and hard-of-hearing students and graduates. RIT enjoys great success in working with employers to fully integrate deaf and hard-of-hearing employees in all aspects of work life and to model the benefits of a diverse workforce to others.

The job search and interview preparation services available to your student also are a major reason behind career success. Each year, students receive thousands of hours of employment advising. Your student also can take advantage of valuable interviewing experience during practice job interviews conducted by faculty, staff, and community volunteers. Additional job search assistance includes help with resume and cover letter writing, job application completion, and access to a variety of resources that students can use to find employers to contact about possible jobs.



## Graduates in Demand

A degree from RIT commands attention in the marketplace. Employers know that our graduates have high-caliber qualifications and work experience that prepares them to deliver results on the job. **RIT enjoys one of the highest rates of employment for its graduates of any comprehensive university in the country.**

This is apparent as on-campus recruiters from major industries snap up RIT students even before they graduate.

## Selected national and international companies that have hired **deaf and hard-of-hearing RIT students and graduates**

- > BNY Mellon
- > Caterpillar, Inc.
- > Defense Finance and Accounting Service
- > Dow Chemical Company
- > General Electric
- > Google
- > Honda
- > IBM
- > Lockheed Martin
- > Merck
- > Microsoft
- > Monroe County Medical Examiner's Office
- > NASA
- > National Institutes of Health
- > Naval Supply Systems Command
- > Solar Turbines
- > Tesla Motors
- > Texas Instruments
- > Toyota
- > Tufts University
- > U.S. Department of Defense
- > Whirlpool
- > Yahoo!



## Audiology and Speech/Language Services

Your student doesn't have to leave campus for audiological and speech/language services. The Communication Studies and Services Department provides services and excellent collaborative educational programs through which your student can broaden and/or strengthen their communication competencies.



RIT/NTID audiologists and speech-language pathologists are certified by the American Speech-Language-Hearing Association and are specifically trained to work with deaf and hard-of-hearing individuals.

### Audiology

The Audiology Center offers a variety of free services, including:

- > hearing tests;
- > consultations;
- > FM/Roger loans;
- > speechreading and/or listening training;
- > cochlear implant mapping;
- > hearing aid and cochlear implant adjustments, troubleshooting, repairs, and upgrades.

An additional advantage is discounted pricing for new hearing aids and accessories. Your student also can purchase batteries, custom sound/swim plugs and earmolds, and other supplies.

### Speech/Language

The Speech and Language Center offers individualized services and can focus on a variety of areas such as:

- > speech intelligibility;
- > grammar and technical/professional vocabulary and practice;
- > communication strategies for work-related interactions/job interviews, presentation skill development and practice;
- > use of current mobile applications as communication tools.

The Speech and Language Center offers equipment and software that provides visual feedback for production and facilitates conversational practice.

### Sign Language Services

RIT also offers optional introductory American Sign Language classes for deaf and hard-of-hearing students who are interested in learning ASL as well as courses for students who use ASL and want to expand their skills.



# Inclusive Community. Accessible Facilities.

RIT offers an environment where deaf and hard-of-hearing students fit in, feel comfortable, pursue their dreams and fulfill their potential. Your student will find a real sense of community at RIT and create connections that last a lifetime.

Deaf and hard-of-hearing students who attend RIT use various communication modes. Some use spoken English. Others use sign language or a combination of speaking and signing. They come from across the United States and many different countries and represent a diverse range of ethnic, geographic, and socioeconomic backgrounds.

Your student will discover an environment that will help them build upon strengths they already have, explore new options and come into their own as a scholar, a leader, and a citizen of the world.

Serving more than 1,100 deaf and hard-of-hearing students, RIT has made sure our campus is accessible.

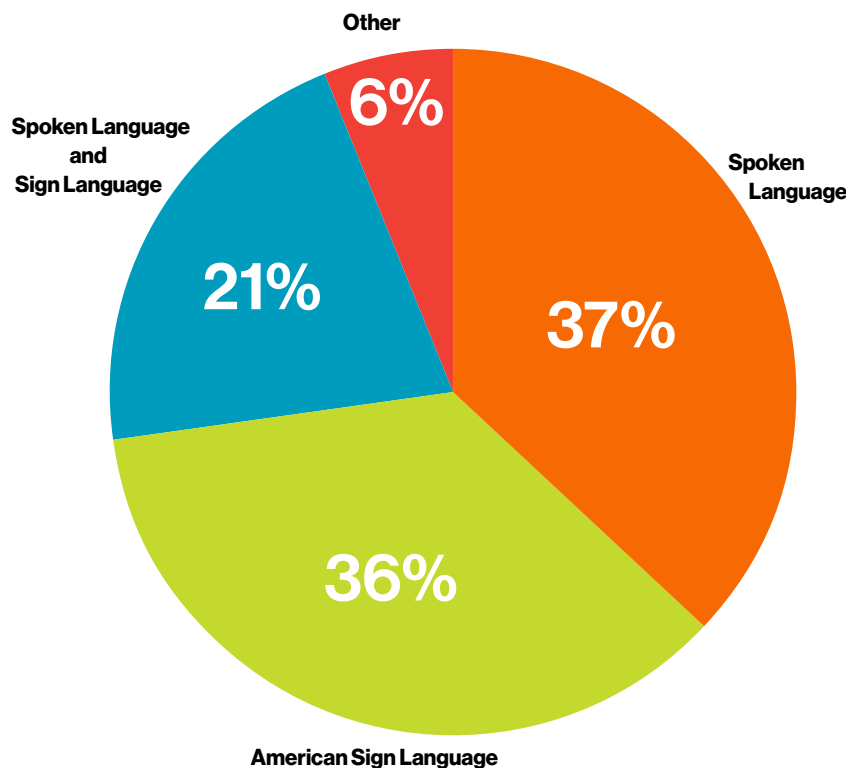
- > Specially designed dorm rooms include strobe fire alarms and doorbells.
- > Visual emergency warning systems are present in all academic buildings.
- > RIT's Public Safety officers are on duty 24/7 for safety, security, and traffic control. Public Safety is easily accessible by phone, text, email, and

blue-light security call boxes located around campus.

- > TigerSafe is the official safety app of RIT and provides instant access to campus safety resources. The safety app also sends students, faculty, and staff important safety alerts in an emergency situation.

Beyond campus, your student will find Rochester has one of the nation's largest populations of people who are deaf or hard of hearing. Many restaurants, movie theaters, and stores have experience serving deaf and hard-of-hearing people.

## Communication Mode of Our Students



Safety is important to me. The academic buildings and residence halls at RIT accommodate deaf students with strobe fire alarm systems, and public safety officials know how to communicate in sign language. These are factors we didn't find at other colleges.

**Rachel Coleman**  
Salt Lake City, Utah  
parent of  
RIT/NTID graduate  
Liam Coleman





# RIT

**Rochester Institute of Technology**

NTID Office of Admissions  
Lyndon Baines Johnson Hall  
52 Lomb Memorial Drive  
Rochester, New York 14623-5604

ADDRESS SERVICE REQUESTED

First Class Mail  
U.S. Postage

**PAID**

Rochester, N.Y.  
Permit 626

## Deaf and hard-of-hearing students find their fit and form their future at RIT.

[rit.edu/ntid/explore](https://rit.edu/ntid/explore)

### Seeing is Believing

The best way to learn more about RIT is to visit. There are many ways to get to know our vibrant campus and inclusive community. Experience the extraordinary at RIT.

[rit.edu/ntid/makeavisit](https://rit.edu/ntid/makeavisit)

#### For more information or to arrange a visit:

Call us today at 585-475-6700, toll free in the U.S. and Canada at 866-644-6843, or by videophone at 585-743-1366. You also can email [ntidadmissions@rit.edu](mailto:ntidadmissions@rit.edu) for information or [visitntid@rit.edu](mailto:visitntid@rit.edu) to arrange a visit.

# RIT

**Rochester Institute of Technology**

NTID Office of Admissions  
52 Lomb Memorial Drive  
Rochester, New York 14623-5604



@ritntid



@ritntid



@ritntid



@ritntid



@ritntid



RIT does not discriminate. RIT promotes and values diversity within its workforce and provides equal opportunity to all qualified individuals regardless of race, color, creed, age, marital status, sex, gender, religion, sexual orientation, gender identity, gender expression, national origin, veteran status or disability.

©2023 Rochester Institute of Technology. All rights reserved.  
RIT and NTID are registered trademarks of Rochester Institute of Technology.  
4M-P3129-6/23-HUB-JBS